

Improve the Consumption of Cement and Sand in Massive Concrete

¹Kaveh Ostad-Ali-Askari, ²Iman Niknejadi, ³Parisa Ashrafi, ⁴Amir Hossein Ashrafi, ⁵Hossein Gholami, ⁶Morteza Soltani, ⁷Hossein Norouzi, ⁸Sona Pazdar and ⁹Shahide Dehghan

¹Department of Environmental Health Sciences, Faculty of Communication, Arts and Sciences, Canadian University Dubai, Dubai, P. O. Box 117781, United Arab Emirates and Department of Civil Engineering, School of Engineering, American University in Dubai, Dubai, P. O. Box 28282 United Arab Emirates and Department of Irrigation, College of Agriculture, Isfahan University of Technology, Isfahan, 8415683111, Iran

²Department of Civil Engineering, Khomeinshahr Branch, Islamic Azad University, Khomeinshahr, Iran

³Department of Architecture and Art, University of Kashan, Kashan, Iran

⁴Department of Architecture and Urban Planning, Isfahan (Khorasgan) Branch, Islamic Azad University, Isfahan, Iran

^{5,7}Department of Civil Engineering, Isfahan (Khorasgan) Branch, Islamic Azad University, Isfahan, Iran

⁶Department of Architectural Engineering, Shahinshahr Branch, Islamic Azad University, Shahinshahr, Iran

⁸Department of Civil Engineering, Aghigh University, Shahinshahr, Isfahan, Iran

⁹Department of Geography, Najafabad Branch, Islamic Azad University, Najafabad, Iran

Article history

Received: 19-10-2019

Revised: 28-07-2020

Accepted: 06-08-2020

Corresponding Author:

Kaveh Ostad-Ali-Askari
Department of Civil
Engineering, School of
Engineering, American
University in Dubai, Dubai, P.
O. Box 28282 United Arab
Emirates and Department of
Irrigation, College of
Agriculture, Isfahan University
of Technology, Isfahan,
8415683111, Iran
Email: ostadaliaskari.k@of.iut.ac.ir
kaveh.oaa2000@gmail.com

Abstract: The massive concrete mixing plan is very important due to its large volume of use in concrete dams. Productivity can be increased in dam manufacturing industry by adopting a suitable method for mixing mass concrete that can meet design, executive and economic needs. Because of intensification rate construction of dams new periods and high cost of implementing such projects any step that reduces their cost of construction can lead to better use of national capital and rapid return on capital. One of the points that can be made to reduce costs is the concrete mixing plan in all of these projects especially concrete dams due to high amount of concrete used. Considering that the required resistance in the body of concrete dam is not very high so the amount of using water in the massive concrete should be such that it is possible to install the concrete with machines. Description overall boundary heat in condensed concrete to avoid fracture and sturdiness issues. Protection concrete heat inside restrictions is a problematic issue.

Keywords: Mixing Plan, Massive Concrete, Concrete Paste, Classifier

Introduction

This article shows a technique for improving structure stage of condensed concrete organizations. Massive constructions in the universal and requirement to attain a maintainable progress and respectable stability for constructions, it is essential to recover the practical data of concrete in the world (Cardarelli *et al.*, 2018). Bulk concrete combination design is very significant owing to its enormous capacity of depletion in concrete dams. An appropriate technique for bulk concrete combination plan that can encounter the plan, operation and financial requirement (Casson and Davies, 1986). Condensed concrete constructions, temperature effects water absorption might reason thermic strains. Mechanical properties and general heats has an essential effect on condensed concrete. Fracture conduct in condensed concrete construction is unavoidable (Cardarelli *et al.*, 2018). Fractures would damage the thermic transmission aptitude of concrete. Generally, in the design of

this concrete we do not face the issue of resistance. In contrast to proper performance, the lack of water leakage form concrete, control of the temperature of constructed concrete and so on there are some points that should be considered in the design of an appropriate concrete (Diederich, 2010). Compounding aggregates used in massive concrete are divided into different ranges depending on facilities and limitations imposed by technical specifications of each project. Increasing these divisions (as much as possible) is a positive step towards improvement of consumption of concrete. Nejad (2000) genetic algorithms is one of suitable method for controlling condensed concrete. Condensed concrete constructions for instance dams might be issue to initial stage furious owing to thermic pressures. But, condensed concrete includes very great capacities of concrete and important management human (Coo and Pheeraphan, 2016). So as to consider heat rises in condensed assemblies, portion of the cement in the concrete combination is frequently substituted by

pozzolanic constituents. Owing to great bulk of concrete and logical intricate in manufacture of substantial arrangements, a precise and practicable process (Campos *et al.*, 2018).

Materials and Methods

Ulm and Coussy's Pattern contemplates concrete such as a sensitive permeable broadcasting self-possessed of a dense essential of cement particles, apertures that might be completed by aquatic (Champion and Davis, 1958). Thermal distortion of a concrete structure alters sporadically, then alteration delays last appearance meteorology variation. Quantification and explanation of dam distortion information is an essential section of dam security assessment and has been investigated by different scholars (Fairbairn *et al.*, 2004). For a concrete dam, the entire distortion is universally classified into different elements, containing a hydrostatic element, a thermal element and a time-related element. Figure 1 and 2 shows leading diagram of stone technological hazard features allowing expansion of peril-decreased plan and possibility-decreased building (Claybaugh *et al.*, 2004).

Development of water absorption feedback is signified by an Arrhenius-kind calculation, determines thermic-stimulation:

$$\frac{dm}{dt} = \frac{d\zeta}{dt} m_{\infty} = \frac{1}{\eta(\zeta)} A(\zeta) \exp\left[-\frac{E_a}{RT}\right] \quad (1)$$

wherever, dm/dt is difference of minimum form; $0 < n < 1$ is grade of water absorption otherwise the relative Among form of frame at a period t regularized through form of frame while water absorption remains comprehensive such as $\xi(t) = m(t)/m_{\infty}$; $\eta(\xi)$ is a viscidness period demonstrating rise in systemic obstruction CSH (Fairbairn *et al.*, 2004).

The polycarboxylates was expressed numerous efficiency necessities such as water-decreasing and stability-sustaining (Brown, 2017; Grigoriadis, 2016). A tendency on the relative between the polymeric constructions and the ensuing presentation surely happens, nonetheless this one patterning is barely gained owing to indecision on constructions in addition to paste conformations. Superplasticizers, also recognized as great-span water-decreasing, combinations, improve the flexibility of concrete (Brown, 2017).

Self-compressing concretes must have high flexibility, consistency and should not separate. It is practicable to generate low stability self-compressing concrete, with the essential flexibility and decreased binder utilization, when inorganic excesses of metakaolin and fly ash are applied (Coo and Pheeraphan, 2015). Self-compressing concrete firstly seemed in the initial 1980's, ensuing original investigation that directed the expansion of concrete combinations then encounters together great flexibility besides great consistency (Breysse, 2012).

Blast oven ash sand has an unused hydraulicity below basic situations, the situation would better the extensive-time stability and permanence of concrete. The similar cementation proportion and the higher-border pressure proportion, the dynamism needed to practice minor crashes before the usual time burdening (Bujuan *et al.*, 1996; Gadri and Bracci, 2017), in addition to the expended power in the determined zone, stay lesser for blast-furnace ash sand concrete than for usual concrete (Bracci *et al.*, 1995; Goldstein and Smith, 1999).

Therefore, it is determined that the harm is completed to blast-furnace ash sand concrete throughout original burdening, in addition to in the persistent area throughout a tiredness procedure, is fewer than that completed toward standard concrete (Santos and Julio, 2007; 2013). Blast-kiln ash gravel remains a result from steelworks and was dormant hydraulicity below basic situations (Fanelli and Giuseppetti, 1982; Najjar and Abdelgader, 2009).

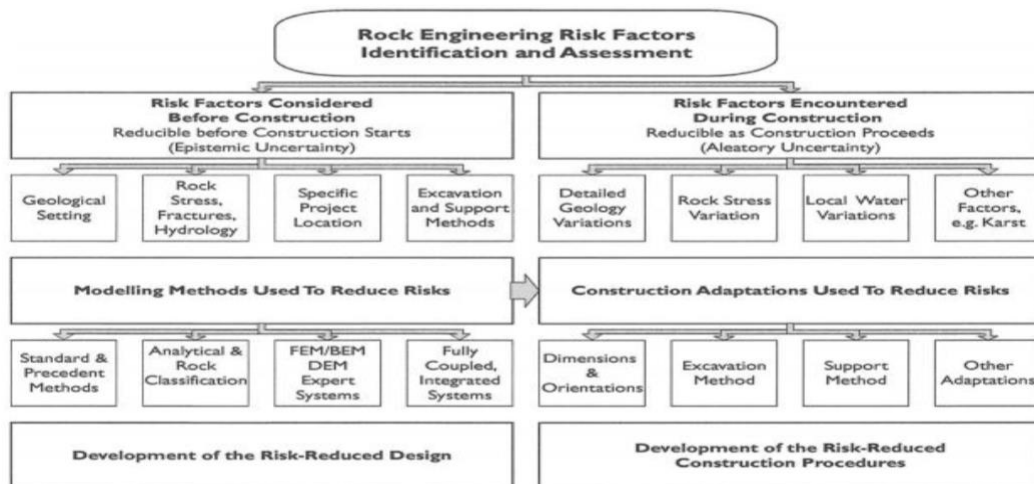


Fig. 1: Leading graph of rock scientific safety features allowing expansion of possibility-decreased plan and peril-decreased building (Hudson and Feng, 2015)

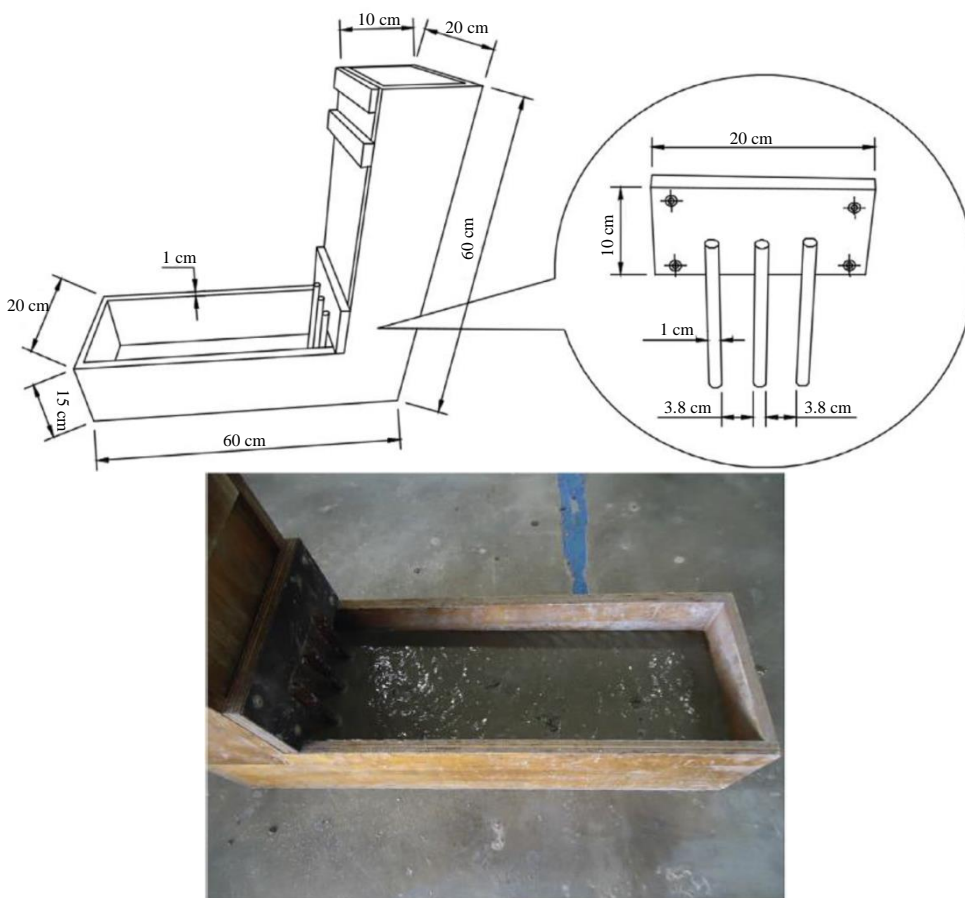


Fig. 2: Detail of concretes (Pelisser *et al.*, 2018)

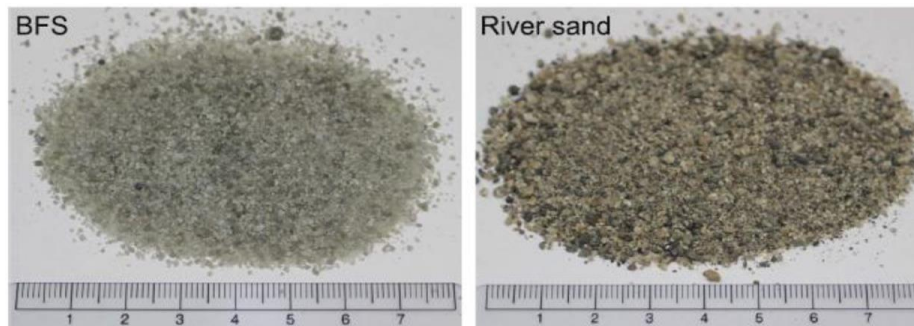


Fig. 3: The Blast-Furnace Slag sand (BFS) and River sand used in this study (Onoue, 2019)

Therefore, as soon as this one was applied for example a substance designed for physical, the alteration the area among sand and dough was enhanced. For the usage of explosion-kiln ash sand to extremely-lasting precast concrete yields, but the systems of these betterments require to be defined. For instance, when concrete with explosion-kiln ash sand (explosion-kiln ash sand concrete) is used to strengthen and formed concrete pieces, tiredness otherwise icing besides warming practices was possible issues. Figure 3 shows the Blast-

Furnace slag sand and Stream gravel applied in this subject (Onoue, 2019; Gu, 2006).

The construction of maintainable structure constituents, such as concrete, has drawn more and more consideration in the previous period. Recent concrete is powerfully reliant on the consistent performance of combinations (Bracci *et al.*, 1995; Hariri-Ardebili and Saouma, 2016). The compressions of diminishing price and ecological effect, quickening structure timetables, plummeting concrete assignment work and refining concrete toughness have united to make

combination practice virtual necessities (Berodier and Scrivener, 2014; Guoqiang *et al.*, 1999).

Results

This factor is observational concept and it means that it is not possible to cover all the aggregates by paste and the stone aggregates remain on the concrete after the end of the vibration without entering into concrete volume. The negative results are (Nejad, 2000; Haselton, 2007; He, 2020):

- Creating vacant space in concrete and thus increasing the permeability and reducing its resistance
- Prolonging the vibration time and resulting damage to the machines
- Separation of grains

The reasons of this can be found in the following cases:

- The inappropriate graining in stone concretes or a huge change in the quality of these concretes compared to the primary design
- Change in the quality of sand
- Unsuitable design of concrete paste or percentage of stone grains mixing

Thus, so as to resolve the above issue through continuously controlling the quality of stone concretes and maintaining the quality of the sand in the permitted range it should be reconsidered in the mixing plan in order to make a suitable paste for granular stones (Abdelgader, 2016; He, 2020; Najjar *et al.*, 2014).

Concrete interfacial roughness performs a considerable function in presenting to the recent-to-old concrete adhering. Superficial coarseness executes an essential feature in the treatment of concrete-to-concrete joints (Abu-Tair *et al.*, 2000; Justnes, 1992). Procedures equal sand-blasting and hydrodemolition are generally modified towards update the superficial smoothness of the concrete layer (Poul, 2018; Qin, 2019). Formerly locating the recent concrete cover it stands usual to confirm the coarseness stage via optical examination (Abdul Awal, 1984; Najjar *et al.*, 2014). Figure 1 Shows the automated laser quantification system with a stepping motors (bottom and right) and concrete floor models on the trial bed. Figure 4 Shows Tekscan sensor between bovine claw and concrete panel in a compaction engine (Franck and Belie, 2006; Gu *et al.*, 2011). The detector is placed in a handle, which in turn is linked to the information attainment card of a private computer.

Considering that the water needed to solidify the cement much less the water used in concrete. if the water is not absorbed in concrete leads to water leakage from concrete and it will produce the following negative results (Nejad, 2000; Khayat and Libre, 2014; Satyarno *et al.*, 2014):

- Problems in concrete
- Forming the cavity in concrete

- Increase permeability and reduce resistance

The causes of this can be found in following cases:

- Increasing the amount of water in the production of concrete relative to the water intended for initial mixing plan
- Shortage of aggregates or change its quality
- Not enough paste
- Increasing the moisture content of sand and increasing water entering and using less sand in concrete production.

Effective methods to solve these problems include (Nejad, 2000; Karsan and Jirsa, 1969):

- Improving the quality of sands
- Increasing the amount of cement

We propose which the electrical appliance ground discovery of tank aquatic seepage zones was applied such as a rational and impressive procedure to discover concrete barrier leakage. After examining the leakage remedy result of many dams, considered that promoting up vents of permeation transits in the headwaters level of the dam is the greatest considerable method (Bonaldi *et al.*, 1977; He, 2017). In addition, distributing the outdated permeance, movements may considerably decrease the hazard of recent seepage passages happening (Berodier *et al.*, 2019; Kang, 2019). The weakness lifetime of the compound pieces in aquatic leak is meaningfully lesser than that of the slab verified in a waterless situation. In the direction of additional comprehend the result of aquatic on decreasing the effectiveness of the glue, extra examinations are showed with an importance on aquatic-captivation and cut bulk in a damp situation (Abu-Tair *et al.*, 2000; Najjar, 2016; Neville, 1995). The tiredness act of a concrete level can be impacted by aquatic seepage. Most researches considering fatigue applications exposed to aquatic concentrate on concrete or reinforced concrete memberships (Bièvre *et al.*, 2017; Julio *et al.*, 2004; Nowek *et al.*, 2007; O'Malley and Abdelgader, 2010). But the tiredness conduct of steel-concrete compound portions might be impacted through aquatic seepage restricted investigation was shown to education the outcome of aquatic on the tiredness of a compound construction (Pereira *et al.*, 2018; Popovics, 1973). Prepared that smooth fractures are often experimental in a concrete level, aquatic seepage seems to be made compound bridge portions (Abdurrahmn, 2014; Higgins and Mitchell, 2011). Figure 5 shows test condition (water leakage). Aquatic seepage from side to side the did track debilitated join of the cementitious sticky in continuity with tiredness danger (Yoshitake *et al.*, 2016; Hoła *et al.*, 2015; Niklasch and Herrmann, 2009).



Fig. 4: Teks can sensor between bovine claw and concrete panel in a compaction engine. The detector is placed in a handle, which in turn is linked to the information attainment card of a private computer (Franck *et al.*, 2008)



Fig. 5: test condition (water leakage) (Yoshitake *et al.*, 2016)

Concrete paste is an adhesive agent in concrete. Reducing adhesion can lead to the following problems (Nejad, 2000; Joudi-Bahri *et al.*, 2012):

- Separation of grains
- Problems in installing concrete

High adhesion also causes problems in the installation of concrete and in the event of problems with adhesion of concrete the paste should be examined (Jeon *et al.*, 2009; Jiang *et al.*, 2018; Najjar, 2009).

Discussion

Today structures are done by sprinkling concrete into shapes named formworks that are typically produced

metal elements (Abdelgader, 2003; Jones *et al.*, 2003). Flaws such as disrobing may perhaps system throughout the elimination of the shape if the superficial closeness among the concrete and the shape is great (Abdelgader, 2008; Hong *et al.*, 2014). Create application of a recent achieve ductile examination, an association was recognized among the shape superficial useful signs and its stickiness inclination to concrete. The innovation of superficial examination is to describe the concrete-to-shape stickiness by calculating the essential force to pull the concrete from the formwork external (Abdelgader, 2005; Issa *et al.*, 2003; Lastra-González *et al.*, 2017). The interfacial connection to concrete has been contrasted between simple and covered formwork. The pull-off ductile examination was established accomplished of position formwork coverings giving to their adherence to concrete

(Spitz *et al.*, 2018; Rivera *et al.*, 2015; ACI, 2005; Wang and Liu, 2008; Matakah and Soroushian, 2018).

Table 1 shows Biochemical structure and physical possessions of concretes. It considers kind of materials which affects concrete that SiO₂ has the highest impact for concrete. Table 2 shows Combination quantities of the cement pastes. It has 3 particles such as Cement, Fly ash, Water that it impacts concrete (Rivera *et al.*, 2015). Table 3 shows Thermic conductivity values that Quartzite has the highest quantity. Dolomite has also highest impact after Quartzite (ACI Committee 207, 1993; ACI, 2005). Table 4 and 5

shows Chemical constructions of binders that the composition such as Cao, Sio₂, Al₂O₃, Mgo, Fe₂O₃, So₃, Na₂O, K₂O, LOI. (Wang *et al.*, 2019). Table 6 shows Chemical constructions that constitutes kind of materials such as SiO₂, CaO and so on. Table 7 shows Combination project for the concrete and It includes Cement, Fine Aggregate, Coarse aggregate and so on. Table 8 shows Compactness, voids contented and water concentration volume trial consequences (Matakah and Soroushian, 2018; IFSTTAR, 2018).

Table1: Chemical composition and physical properties of concretes (Rivera *et al.*, 2015)

Material	SiO ₂	Al ₂ O ₃	Fe ₂ O ₃	K ₂ O	CaO	MgO	Na ₂ O	SO ₃	Specific gravity	Loss on ignition (%)
OPC	20.39	6.01	3.15	0.75	63.25	1.30	0.15	2.35	3.12	1.72
BC	28.30	2.80	2.19	0.40	54.10	1.18	0.54	0.74	2.90	9.23
FA-C	33.10	11.60	6.53	0.80	28.50	1.66	1.39	7.69	2.37	7.08
FA-F	55.80	21.00	8.31	1.07	5.87	2.70	1.54	0.44	2.39	1.01

Table2: Mixture proportions of the cement pastes (Rivera *et al.*, 2015)

Mixture ID	Cement (kg/m ³)	Fly ash (%)	Fly ash (kg/m ³)	Water (kg/m ³)
OPC	1359.7	0	0.0	571.1
BC	1307.5	0	0.0	549.1
40-C	865.7	40	431.5	544.8
60-C	595.4	60	667.7	530.4
80-C	307.4	80	919.2	515.2
40-F	864.4	40	434.5	545.5
60-F	594.0	60	671.7	531.6
80-F	306.4	80	924.0	516.7

Table 3: Thermic conductivity standards (ACI Committee 207, 1993; ACI, 2005)

Aggregate	Thermal conductivity, W/(m k)	Thermal diffusivity, m ² /h
Quartzite	3.5	0.0054
Dolomite	3.2	0.0047
Calcareous	2.6-3.3	0.0046
Granite	2.2-2.7	0.0040
Rhyolite	2.2	0.0033
Basalt	1.9-2.2	0.0030

Table 4: Biochemical structures of binders (wt%) (Wang *et al.*, 2019)

Composition	CaO	SiO ₂	Al ₂ O ₃	MgO	Fe ₂ O ₃	SO ₃	Na ₂ O	K ₂ O	LOI
ES-UHPC binder	37.0	29.0	14.3	3.1	2.9	8.2	0.19	0.44	0.3
N-UHPC binder	50.1	34.4	5.2	3.2	2.3	2.1	0.14	0.44	2

Table 5: Properties of steel fibers (Wang *et al.*, 2019)

Tensile strength/MPa	Elastic modulus/Gpa	Density/(kg/m ³)	Length/mm	Diameter/um	Slenderness ratio
2500	200	7850	13	200	60

Table 6: Biochemical structures (Matakah and Soroushian, 2018)

	SiO ₂	CaO	Al ₂ O ₃	Fe ₂ O ₃	MgO	K ₂ O	Na ₂ O	SO ₃	Blaine fineness, cm ² /g
OPC	20.1	64.2	5.31	2.86	2.65	0.10	0.02	2.14	3870
AAC	35.2	28.1	13.6	4.03	3.73	1.14	8.89	0.53	3960

Table 7: Mix design for the concrete (Matakah and Soroushian, 2018)

Material	Quantity, kg/m ³
Cement	400
Fine aggregate	910
Coarse aggregate	1100
Water-to-cement ratio	0.45-0.55

Table 8: Density, voids content and water absorption capacity test results (Matalkah and Soroushian, 2018)

	Density	voids (%)	Absorption (%)
OPC concrete	2.28	12.25	6.17
AAC concrete	2.30	14.07	5.74

Conclusions

The concept of performance in the massive concrete differs slightly from other types of concrete. the reasons for this are (Nejad, 2000).

- Due to coarseness of grains and impossibility of mixing it. Transportation is carried out by silo bus or similar machines. This way of transferring itself creates a psychological limit on concrete (Abdelgader, 1999; Mazighi and Mihoubi, 2018, Stroeven, 2000).

Generally, a massive concrete examine overhead. You should contemplate the following points to achieve the goal (Nejad, 2000; Liu *et al.*, 2019).

Temperature of Concrete

Temperature control in massive concrete can be achieved by lowering the temperature of concrete, plummeting the utilization of cement, controlling its temperature and change the amount of water and ice used (Nejad, 2000; Liu *et al.*, 2009; Park *et al.*, 1982; Paulay and Priestley, 1992).

Amount of Water(ice)

Water and ice consumption, in addition to the effect on the temperature directly affects the performance on the temperature so that the lack of it will result in serve reduction in the efficiency and the large amount of it will cause excessive moisture of the concrete and will make it difficult to carry and place the concrete (Nejad, 2000; Yoon and Kim, 2018).

Amount of Concrete Paste

The main component impacting the performance of concrete that in both cases the deficit or excess of that vibration will be difficult. Reduction in efficiency (Abdelgader, 1996; Meng *et al.*, 2019), excessive adhesion and the lack of proper vibration include problems caused by an increase in the amount of paste. In contrast, the shortage of paste leads to the separation of grains and the possibility of vibration and formation of a coherent and homogeneous mass disappears (Nejad, 2000; Pant *et al.*, 2013, Pelisser *et al.*, 2012).

Stone Grains

The effect of the dimension of grains and its consumption along with the amount of concrete paste is understood that it mentioned before. In massive concrete as well as other concrete the round corner stones have better performance than the broken stones (Nejad, 2000; Lee and Oh, 2018; Shaker *et al.*, 2018).

Additives

Along with lubricants and reducing the amount of water, less use of air-manufacturer concretes can have a good effect on performance of concrete (Nejad, 2000; Metha and Monteiro, 2006).

Concrete Paste

Concrete paste is the part of concrete which is responsible for filling the gap between aggregates and it contains cement and part of fine grains (Nejad, 2000; Mostofinejad, 2005).

Mixing Plan

Considering that mixing plan of massive concrete is almost the same as conventional concrete only a few points are mentioned in this section (Nejad, 2000; Morohashi *et al.*, 2013).

Amount of Cement. As mentioned before, generally in massive concrete we do not face the problem of resistance. The fact that in addition to resistance and economics of the design they affect the amount of cement consumption are: Limitations of concrete temperature during construction and solidification, roughness of concrete and the water leakage from it (Nejad, 2000; Mostofinejad, 2005).

Water and Ice

The needed water can be determined depending on the performance the temperature and resistance (Selçuk and Gökçe, 2015; Yassin, 1994).

Additives

Depending on environment and specification required can be determined (Nejad, 2000; Molines and Medina, 2015).

Stone Concretes

The quality and consumption of these concretes play a crucial role in improving mixing plan of massive concrete so that the amount of cement and additives and ice consumption which is a major cost in production of concrete has an impact (Nejad, 2000; Moradloo *et al.*, 2019).

Mixing Percentage

The granularity curve of the stone concretes is the final determinant of the mixing rate and the final curve of concrete. In the final curve it should be noted that the fracture does not occur with a sudden gradient change (Nejad, 2000; Moradloo *et al.*, 2019). Figure 8 shows Ice (vague) and concrete precooled stationary categorized concrete mixer (right) (Schackow *et al.*, 2016). Figure 9 Shows Component measurement diversity and exact shallow region of concrete elements (Singh *et al.*, 2017; Sanchez and Sobolev, 2010).

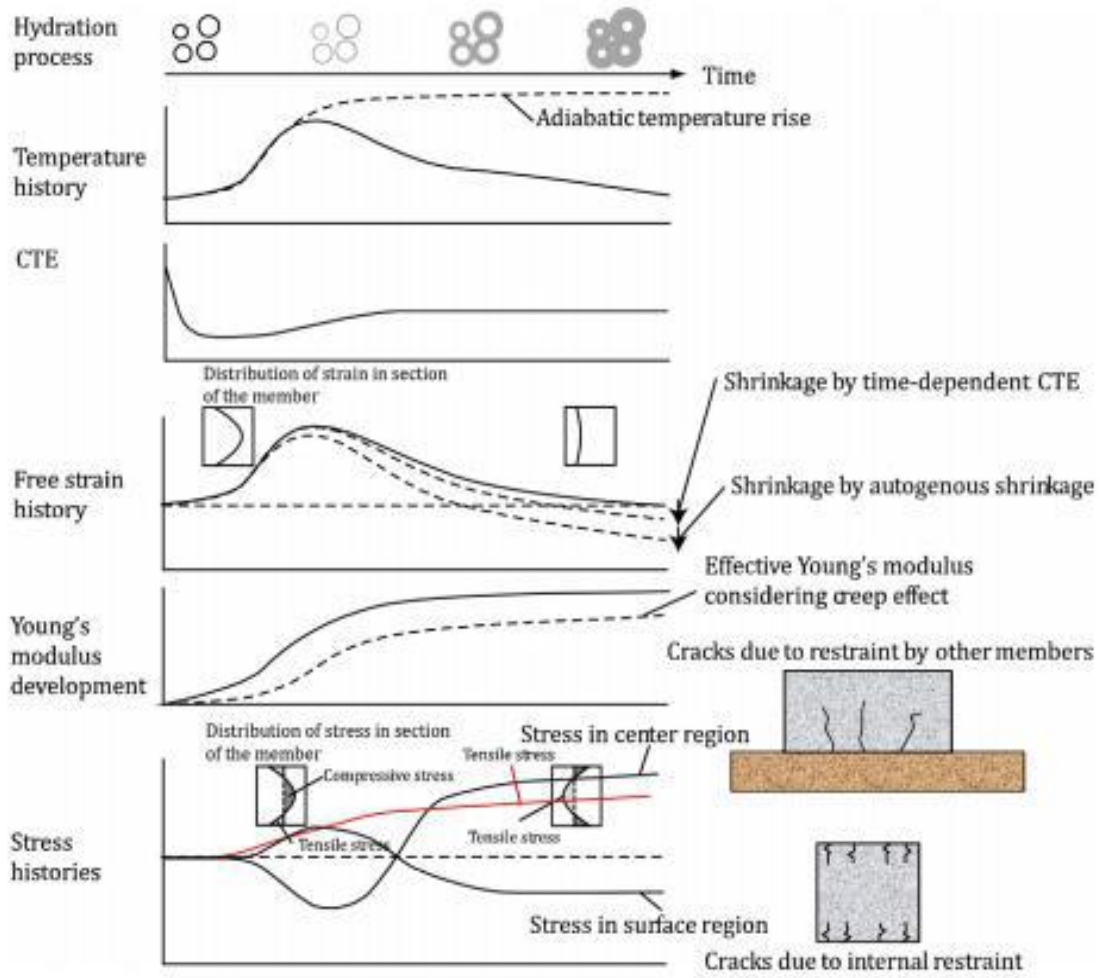


Fig. 6: The formal shape for the fracturing of mass concrete (Maruyama and Lura, 2019)

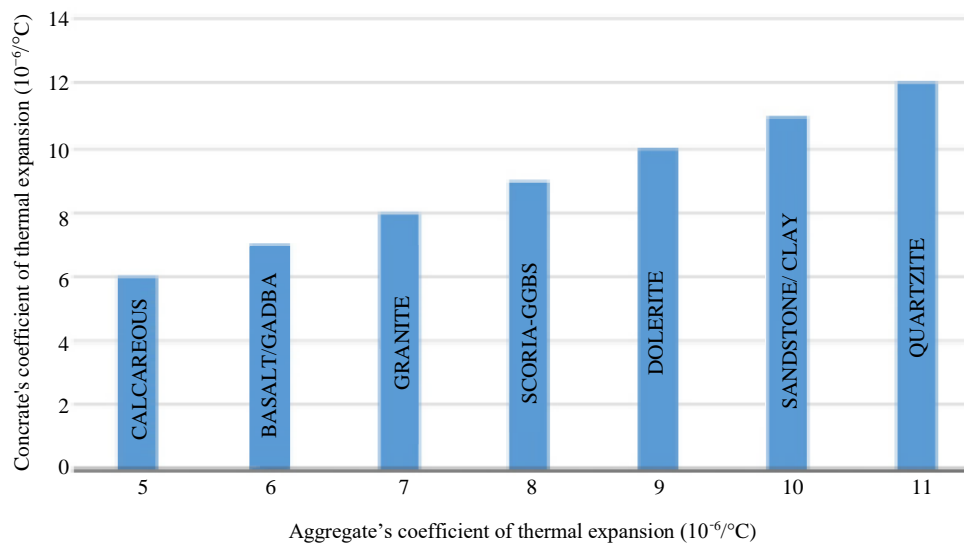


Fig. 7: Aggregate's influence in concrete (Metha and Monteiro, 2006)



Fig. 8: Frost (absent) and concrete precooled static classified concrete blender (right) (Schackow *et al.*, 2016)

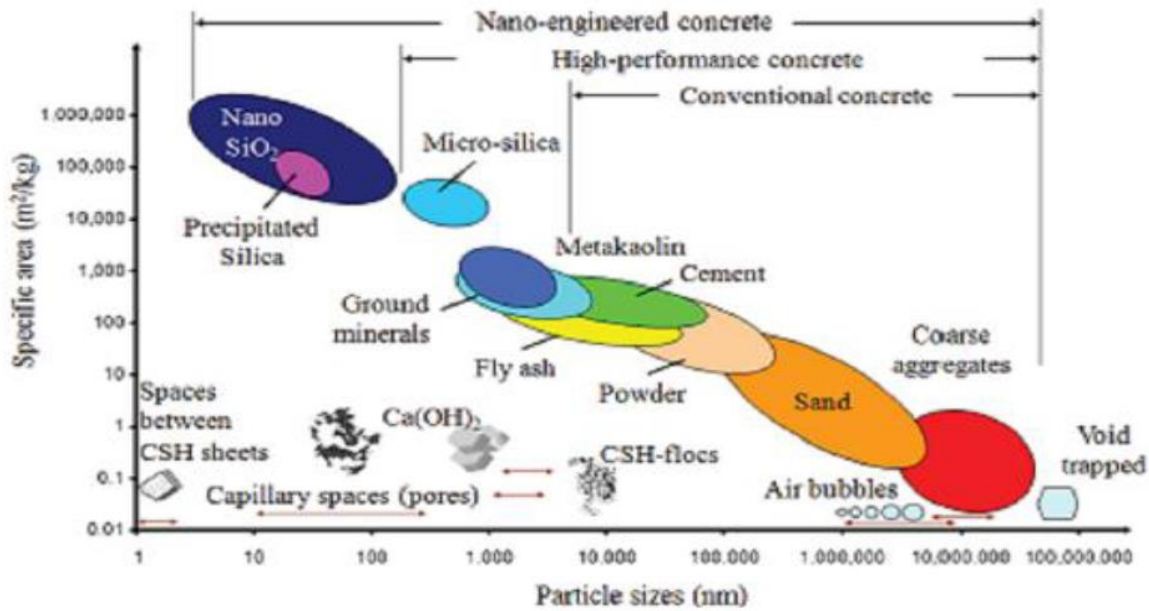


Fig. 9: Element dimension variety and precise superficial zone of concrete constituents (Singh *et al.*, 2017; Sanchez and Sobolev, 2010)

The temperature of form concrete may rise considerably owing to the mixture of temperature freedom produced by cement hydration and thermic limitations for dense components might method adiabatic situations (Bayer, 2004; Zhu *et al.*, 2019). This heat rise consequences in thermic distortion of physical memberships completed of concrete and that one effects together the kinetics of cement hydration. While the heat of content concrete rises formerly reductions once more, thermic straining happens (Alev *et al.*, 2015; Wu *et al.*, 2007). Owing to heat inclines segment concrete element, central element would originally enlarge outside

membrane. Ductile pressures would accordingly rise membrane that might origin superficial fractures (Assawamartbunlue *et al.*, 2015; Xu *et al.*, 2012). Fractures happen in stage while heat remains cumulative. It be situated usually comparatively reedy and would near advanced while heat of entire concrete component balances. Attendance outside limitation, compressive pressures will rise dense concrete fundamental while heat rises (Baltazar *et al.*, 2014; Wong and Lim, 2006). Condensed pressures would finally chance throughout ductile pressures while heat reduces toward balance by outside situation. It remains mostly produced through

alteration concrete throughout heat rise and throughout heat reduce. While heat reduces, grade of absorbing water concrete to be advanced when reduction/sidle reduces grade of absorbing water (Basnet and Panthi, 2018; Wu *et al.*, 2003). Additional aim ductile pressures would surpass early condensed pressure remains attendance kinds of reduction, such as autogenic reduction (Zhu, 1999; Xie *et al.*, 2019). Lastly, heat of new concrete stands advanced that steadiness heat of situation throughout preservation stage, heat alteration throughout development is lesser than throughout preservation (Benaicha *et al.*, 2015; Xu *et al.*, 2014). Moreover, constant of thermic growth is a least situation and now rise by waterlessness. Figure 6 shows the formal shape for the fracturing of mass concrete (Maruyama and Lura, 2019; Zhang *et al.*, 2015; 2017). Figure 7 shows Aggregate's influence in concrete (Metha and Monteiro, 2006). Figure 10 Displays Hydration model for cement hydration (Middendorf and Singh, 2006; Zacoeb *et al.*, 2011). Figure 15 Displays Dye sensitized concrete solar cell

(Singh *et al.*, 2017; Thomann and Lebet, 2008; Zhang *et al.*, 2008). Figure 16 Shows Setup of tensile test (Wang *et al.*, 2019; Taillet *et al.*, 2014). Figure 11 shows general response Nano silica in Concrete. Figure 12 shows Part of Nano silica in Cementations organization. Figure 13 shows Result of Nano silica on great heat of captivating water of cement paste (Singh *et al.*, 2013). Figure 14 shows Crack connection consequence in cement/CNTs composites (Hanus and Harris, 2013). Figure 17 shows SEM explanations the water concentration profits of cement. Figure 18 shows Grade of water concentration evaluation significances for cement (Matakah and Soroushian, 2018). Figure 19 shows Effects of remaining structure (a), definite event (b) and active modulus (c) Feature of cement (Matakah and Soroushian, 2018). Figure 20 shows Particulars of arrangement cement which cracks and De-bonding is obvious. Figure 21 shows Requirement of cement. Figure 22 shows Shallow presences cement. Figure 23 shows Graphic optical microscope explanations concrete.

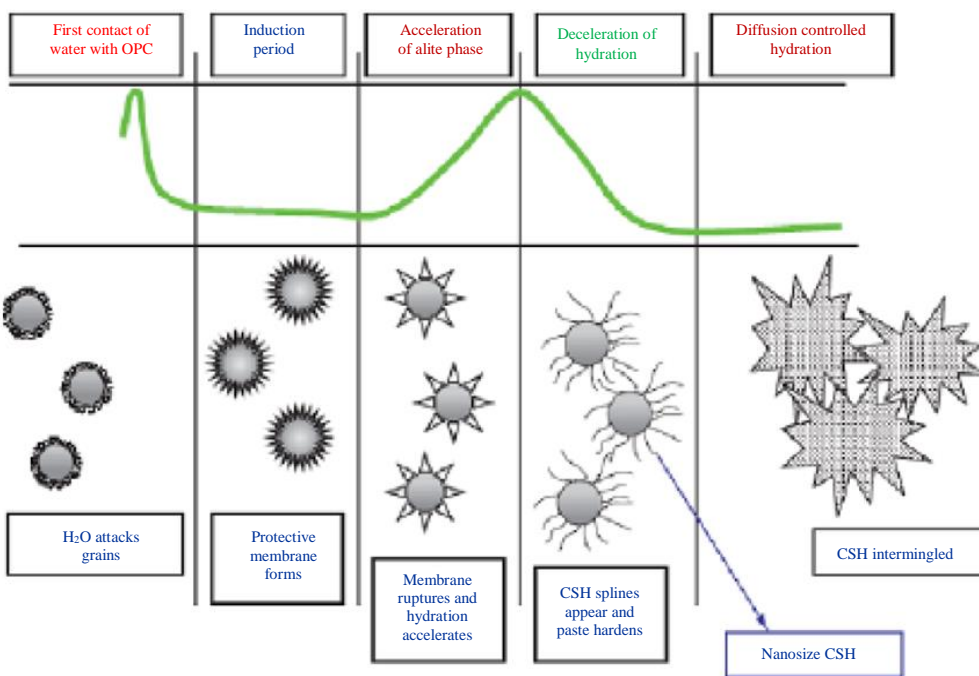


Fig. 10: Hydration model for cement hydration (Middendorf and Singh, 2006)

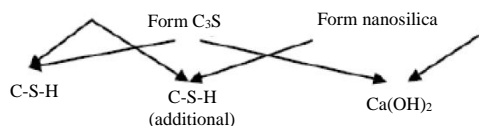
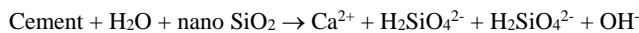


Fig. 11: The overall reaction nanosilica in Concrete (Singh *et al.*, 2017)

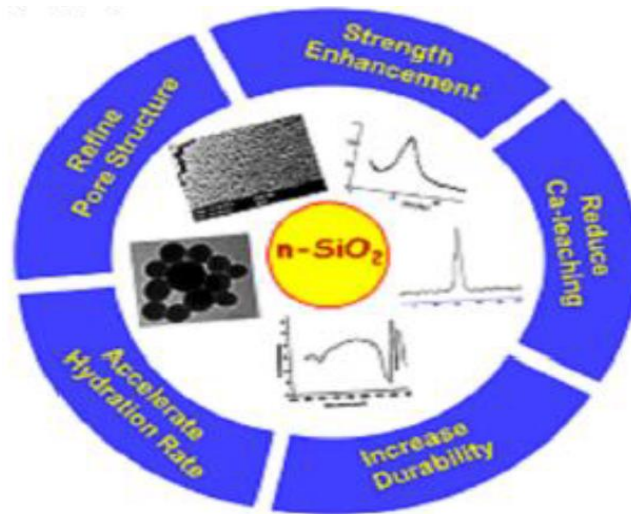


Fig. 12: Role of nanosilica in Cementitious system (Singh *et al.*, 2017)

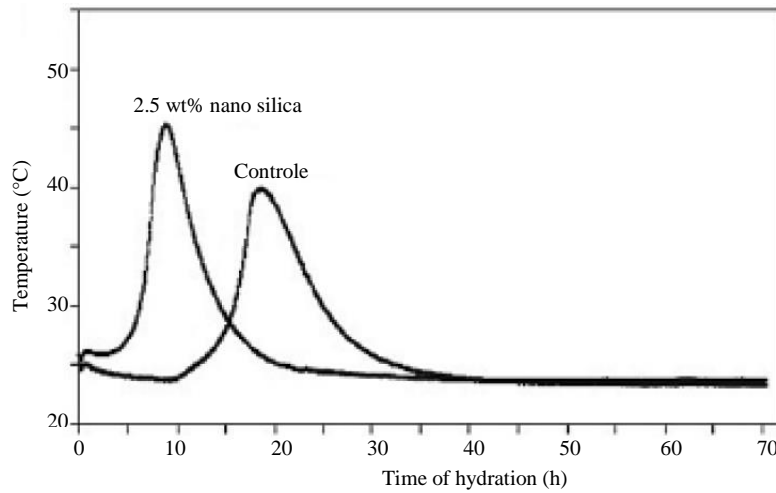


Fig. 13: Effect of Nano silica on high temperature of absorbing water of cement adhesive (Singh *et al.*, 2013)

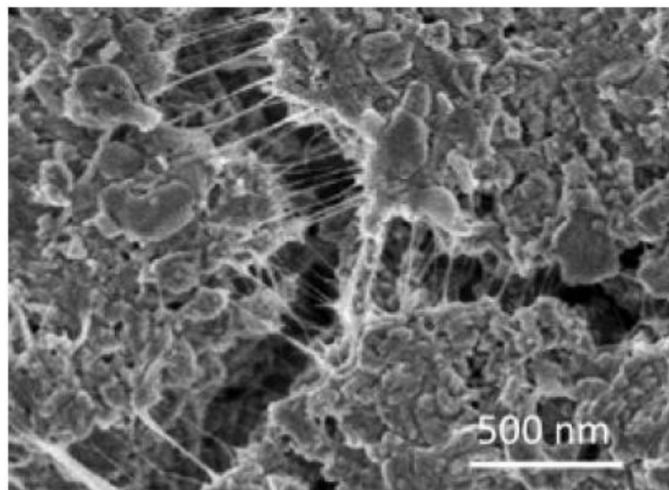


Fig. 14: Fissure joining result in cement/CNTs compounds (Hanus and Harris, 2013)

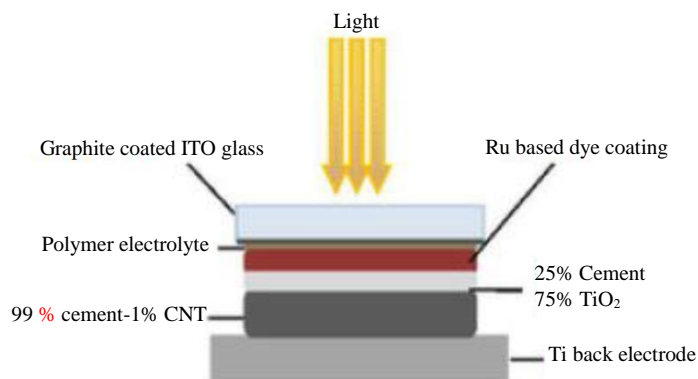


Fig. 15: Dye sensitized concrete solar cell (Singh *et al.*, 2017)

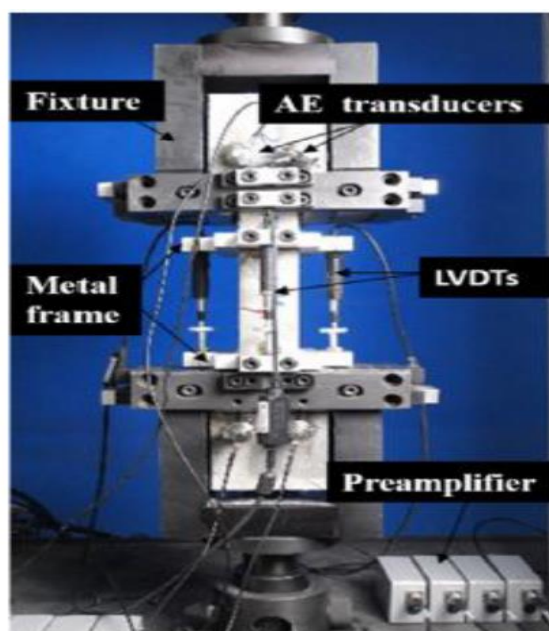
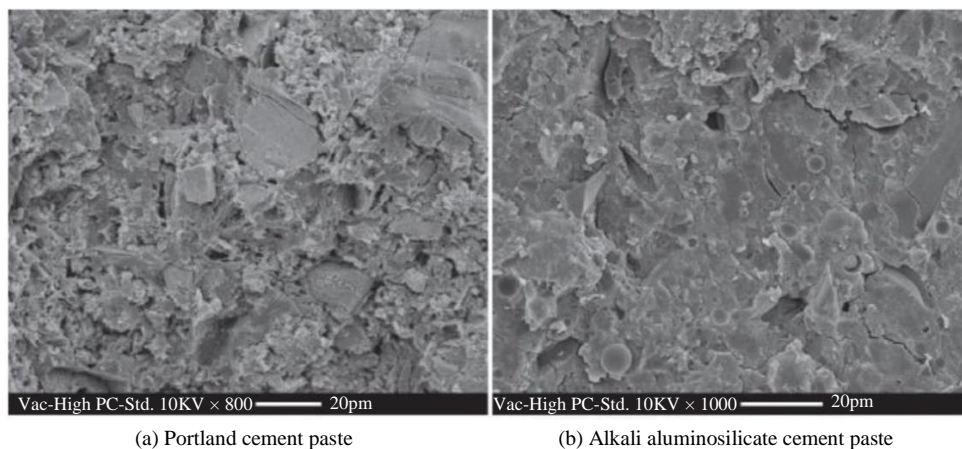


Fig. 16: Setup of tensile test (Wang *et al.*, 2019)



(a) Portland cement paste (b) Alkali aluminosilicate cement paste
Fig. 17: SEM descriptions the water absorption yields of cement (Mataalkah and Soroushian, 2018)

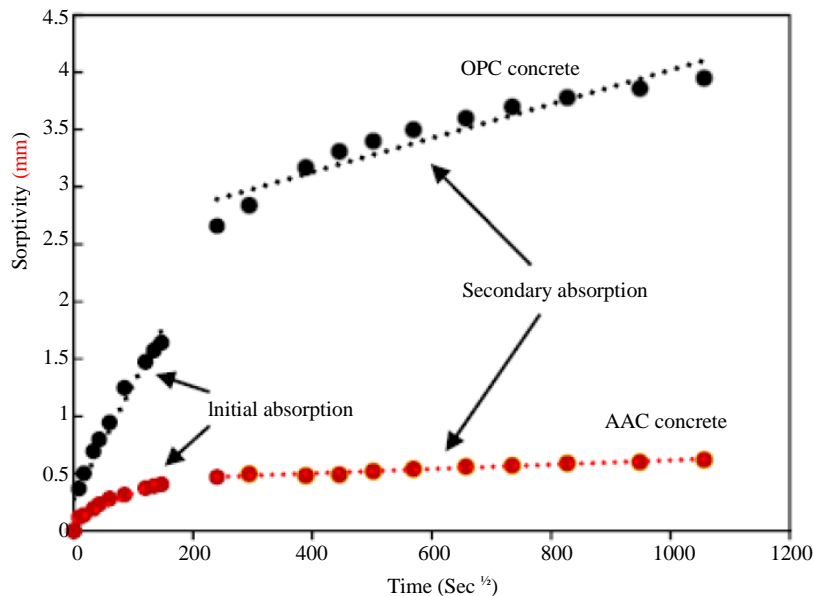


Fig. 18: Degree of water absorption assessment consequences for cement (Mataalkah and Soroushian, 2018)

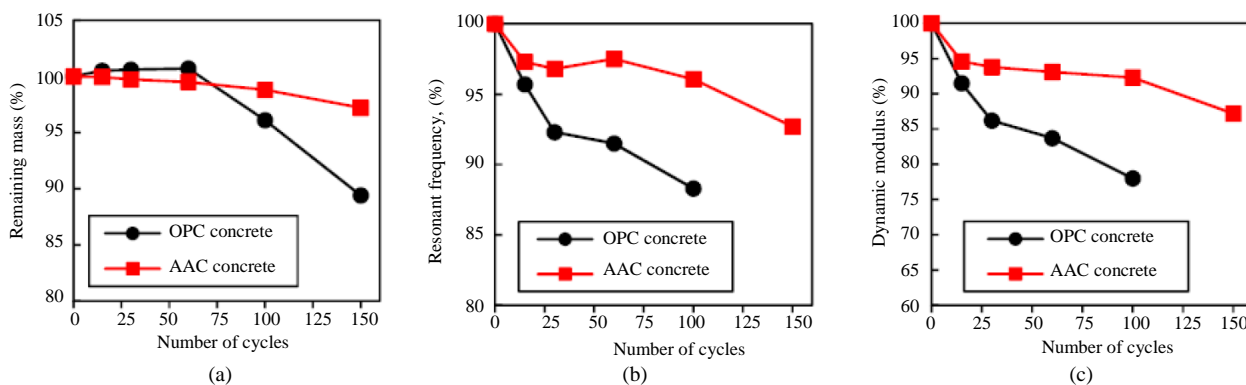


Fig. 19: Impacts of residual frame (a), resonating occurrence (b) and energetic modulus (c) Detail of cement (Mataalkah and Soroushian, 2018)

Circumstance of substantial concrete constructions, warmth made by cement water absorption might origin fracturing owing to thermic tensions. Combination scheme of concrete applied such as constructions would examine explanation of powered possessions and made heats. Applying investigational project values, the water absorption warmth and expansion of condensed stability stay computed in direction to control in what way configuration of concrete and attendance of Additional cementing constituents impact the features of concrete and make a combination plan procedure (Singh *et al.*, 2013; Spitz *et al.*, 2018). Procedure support to control that combination project reduces water absorption heat for a particular condensed stability (Shon *et al.*, 2018; 2016). In

substantial constructions, exothermic of water absorption responses of concrete and thermic powered conduct of primary stage concrete could principal, if straining is controlled, expansion of pressing and ductile pressures. Ductile pressures surpass ductile stability, fracturing might happen, intimidating toughness of concrete. In direction to stop peril of fracturing in addition to Late Development, struggling concrete, application of accompaniments remain optional (Bourchy *et al.*, 2019). Fly ash was determined extensively applied to advance concrete endurance throughout ages; though, the quantity of Fly ash was imperfect through comparatively small cement details in concrete. Rivera *et al.* (2015; Bourchy *et al.*, 2019; Schackow *et al.*, 2016; Singh *et al.*, 2017; Shen *et al.*, 2019).

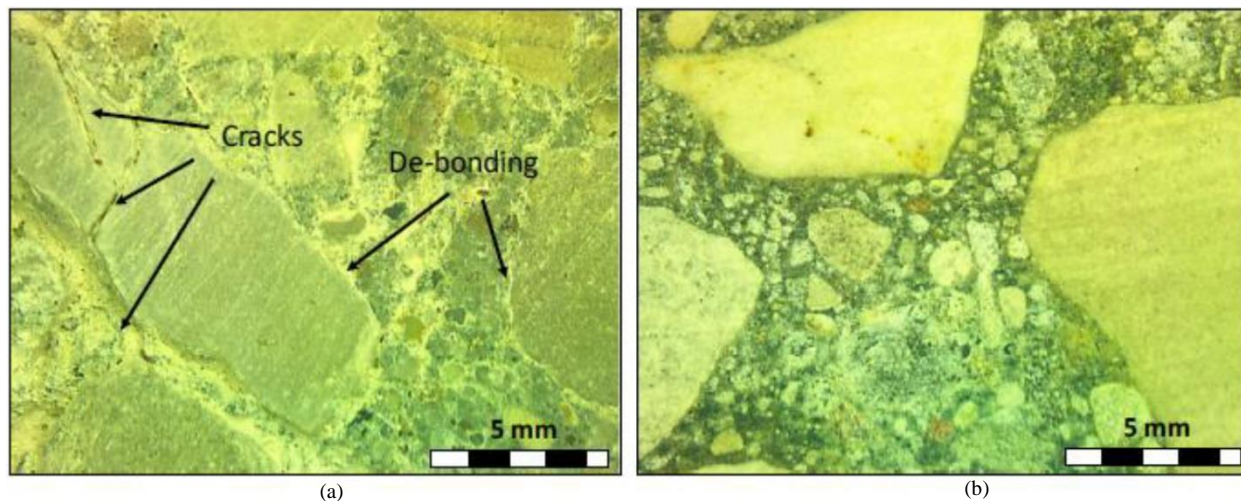


Fig. 20: Details of sequence cement (Mataalkah and Soroushian, 2018); (a) Portland cement concrete; (b) Alkali aluminosilicate cement concrete

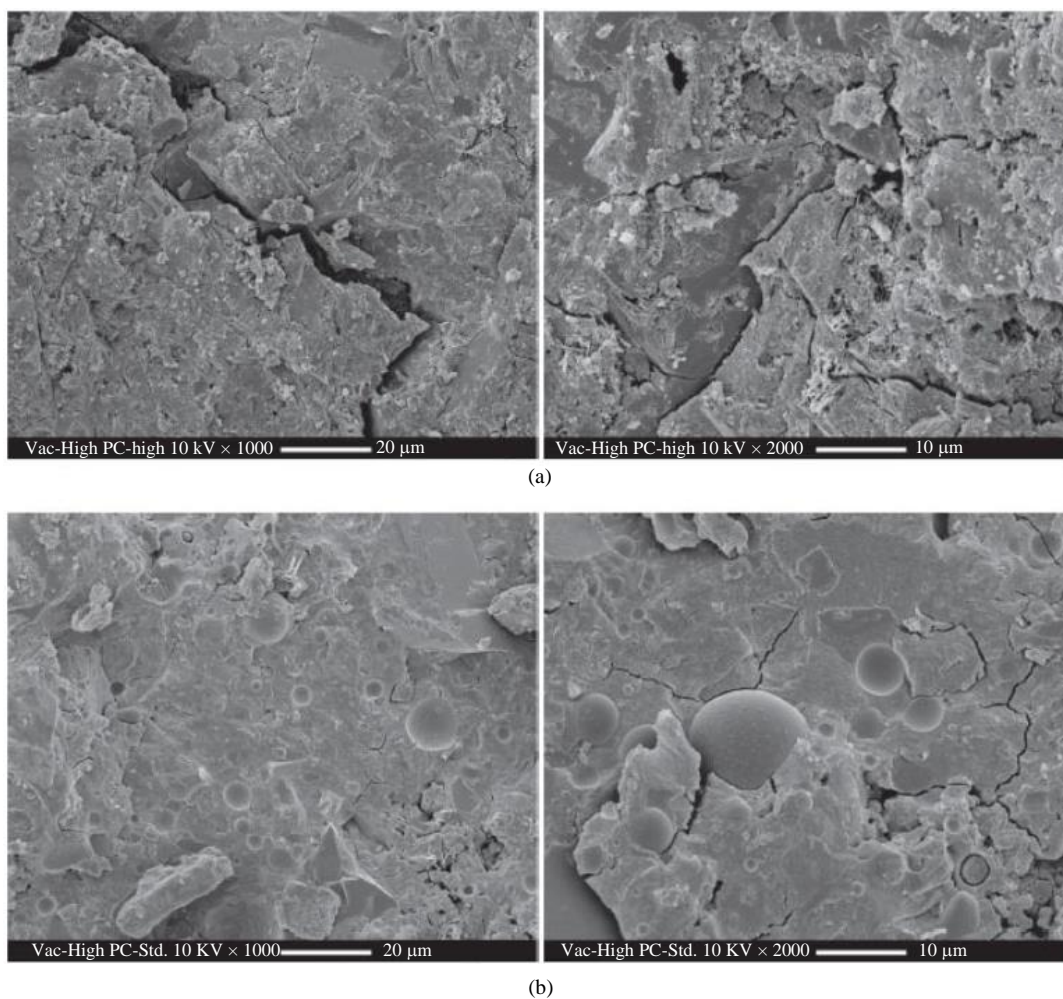


Fig. 21: Qualification of cement (Mataalkah and Soroushian, 2018) (a) Portland cement paste; (b) Alkali aluminosilicate cement paste

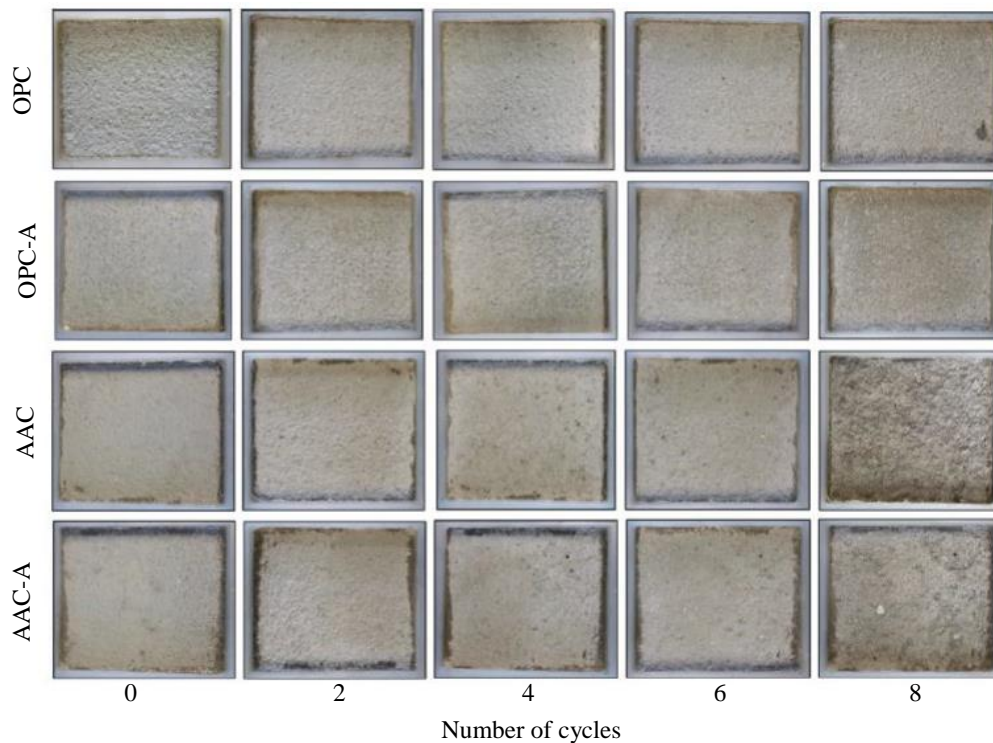


Fig. 22: Superficial attendances cement (Matakah and Soroushian, 2018)

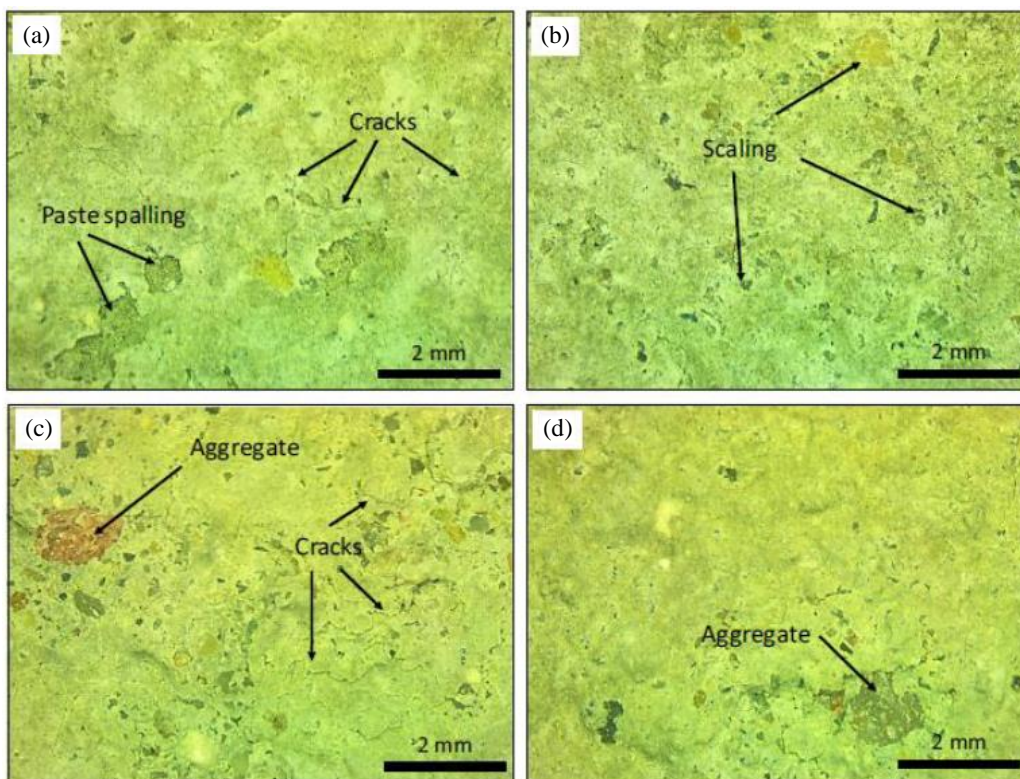


Fig. 23: Visual microscope descriptions concrete (Matakah and Soroushian, 2018)

Acknowledgment

This research was supported by the Department of Civil Engineering, School of Engineering, American University in Dubai, Dubai, P. O. Box 28282 United Arab and Isfahan University of the Technology. We thank our all authors who provided insight and expertise that greatly assisted the research.

Author's Contributions

All authors equally contributed in this work.

Ethics

The present Study and ethical aspect were approved by the Department of Civil Engineering, School of Engineering, American University in Dubai, Dubai, P. O. Box 28282 United Arab and Isfahan University of the Technology. The present study was approved by the Department of Civil Engineering, School of Engineering, American University in Dubai, Dubai, P. O. Box 28282 United Arab AND Isfahan University of Technology.

References

- Abdelgader, H. S. (1996). Effect of the quantity of sand on the compressive strength of two-stage concrete. *Magazine of Concrete Research*, 48(177), 353-360. doi.org/10.1680/mac.1996.48.177.353
- Abdelgader, H. S. (1999). How to design concrete produced by a two-stage concreting method. *Cement and concrete research*, 29(3), 331-337. doi.org/10.1016/S0008-8846(98)00215-4
- Abdelgader, H. S., & Ben-Zeitun, A. E. (2005). TENSILE STRENGTH OF TWO-STAGE CONCRETE MEASURED BY DOUBLE-PUNCH TESTS. In *Role of Concrete in Nuclear Facilities* (pp. 43-50). Thomas Telford Publishing.
- Abdelgader, H. S., & Elgalhud, A.A. (2008). Effect of grout proportions on strength of two stage concrete. *Struct. Concr.* 9 (3) 163-170. doi.org/10.1680/stco.2008.9.3.163
- Abdelgader, H. S., & Górski, J. (2003). Stress-strain relations and modulus of elasticity of two-stage concrete. *Journal of materials in civil engineering*, 15(4), 329-334. doi.org/10.1061/(ASCE)0899-1561(2003)15:4(329)
- Abdelgader, H. S., Górski, J., Khatib, J., & El-Baden, A. S. (2016). Two-stage concrete: effect of silica fume and superplasticizers on strength. *Concrete Plant and Precast Technology*, 82(3), 38-47.
- Abdul Awal, A. S. M. (1984). Manufacture and properties of prepacked aggregate concrete.
- Abdurrahman, H., Abdelgader, H. S., Awal, A. A., & El-Baden, A. S. (2014). Evaluation of energy dissipation in flexure for two stage concrete. *Malaysian Journal of Civil Engineering*, 26(3).
- Abu-Tair, A. I., Lavery, D., Nadjai, A., Rigden, S. R., & Ahmed, T. M. A. (2000). A new method for evaluating the surface roughness of concrete cut for repair or strengthening. *Construction and building materials*, 14(3), 171-176. doi.org/10.1016/S0950-0618(00)00016-7
- ACI Committee 207. (1993). *Cooling and Insulating Systems for Mass Concrete*. Detroit-USA: American Concrete Institute; 1998.
- ACI. (2005), *Guide for the Use of Preplaced Aggregate Concrete for Structural and Mass Concrete Applications*, vol. 304.1, American Concrete Institute, ACI Committee, 2005. p. 19.
- Alev, Ü., Antsov, P., & Kalamees, T. (2015). Air leakage of concrete floor and foundation junctions. *Energy Procedia*, 78, 2046-2051. doi.org/10.1016/j.egypro.2015.11.217
- Assawamartbunlue, K., Surawattanawan, P., & Luknongbu, W. (2019). Specific energy consumption of cement in Thailand. *Energy Procedia*, 156, 212-216. doi.org/10.1016/j.egypro.2018.11.130
- Baltazar, L., Santana, J., Lopes, B., Rodrigues, M. P., & Correia, J. R. (2014). Surface skin protection of concrete with silicate-based impregnations: Influence of the substrate roughness and moisture. *Construction and Building Materials*, 70, 191-200. doi.org/10.1016/j.conbuildmat.2014.07.071
- Basnet, C. B., & Panthi, K. K. (2018). Roughness evaluation in shotcrete-lined water tunnels with invert concrete based on cases from Nepal. *Journal of Rock Mechanics and Geotechnical Engineering*, 10(1), 42-59. doi.org/10.1016/j.jrmge.2017.07.006
- Bayer, R. (2004). Use of preplaced aggregate concrete for mass concrete applications. Middle East Technical University, Turkey.
- Benaicha, M., Jalbaud, O., Alaoui, A. H., & Burtschell, Y. (2015). Correlation between the mechanical behavior and the ultrasonic velocity of fiber-reinforced concrete. *Construction and Building Materials*, 101, 702-709. doi.org/10.1016/j.conbuildmat.2015.10.047
- Berodier, E. S. K. S. G., & Scrivener, K. (2014). Understanding the Filler Effect on the Nucleation and Growth of C-S-H. *Journal of the American Ceramic Society*, 97(12), 3764-3773. doi.org/10.1111/jace.13177
- Berodier, E., Gibson II, L. R., Burns, E., Roberts, L., & Cheung, J. (2019). Robust production of sustainable concrete through the use of admixtures and in-transit concrete management systems. *Cement and Concrete Composites*, 101, 52-66. doi.org/10.1016/j.cemconcomp.2018.01.008
- Bièvre, G., Lacroix, P., Oxarango, L., Goutaland, D., Monnot, G., & Fargier, Y. (2017). Integration of geotechnical and geophysical techniques for the characterization of a small earth-filled canal dyke and the localization of water leakage. *Journal of Applied Geophysics*, 139, 1-15. doi.org/10.1016/j.jappgeo.2017.02.002

- Bonaldi, P., Fanelli, M., & Giuseppetti, G. (1977). Displacement forecasting for concrete dams. *International water power and dam construction*, 29(9), 42-50.
- Bourchy, A., Barnes, L., Bessette, L., Chalencon, F., Joron, A., & Torrenti, J. M. (2019). Optimization of concrete mix design to account for strength and hydration heat in massive concrete structures. *Cement and Concrete Composites*, 103, 233-241. doi.org/10.1016/j.cemconcomp.2019.05.005
- Bracci, J. M., Reinhorn, A. M., & Mander, J. B. (1995). Seismic resistance of reinforced concrete frame structures designed for gravity loads: performance of structural system. *Structural Journal*, 92(5), 597-609. doi.org/10.14359/909
- Breysse, D. (2012). Nondestructive evaluation of concrete strength: An historical review and a new perspective by combining NDT methods. *Construction and Building Materials*, 33, 139-163. doi.org/10.1016/j.conbuildmat.2011.12.103
- Brown, E. T. (2017). Reducing risks in the investigation, design and construction of large concrete dams. *Journal of Rock Mechanics and Geotechnical Engineering*, 9(2), 197-209. doi.org/10.1016/j.jrmge.2016.11.002
- Bujuan, L., Xiping, L., & Zhaoyang, F. (1996). Study on the Monitoring and Forecasting Model for Deformation of Arch Dam [J]. *Water Resources and Hydropower Engineering*, 7.
- Campos, A., Lopez, C. M., Blanco, A., & Aguado, A. (2018). Effects of an internal sulfate attack and an alkali-aggregate reaction in a concrete dam. *Construction and Building Materials*, 166, 668-683. doi.org/10.1016/j.conbuildmat.2018.01.180
- Cardarelli, E., Cercato, M., & De Donno, G. (2018). Surface and borehole geophysics for the rehabilitation of a concrete dam (Penne, Central Italy). *Engineering Geology*, 241, 1-10. doi.org/10.1016/j.enggeo.2018.05.008
- Casson, R. B. J., & Davies, I. L. (1986). Performance of concrete backfilling materials for shafts and tunnels in rock formations. Volume 1: concrete selection and properties (No. EUR--10383 (V. 1)). Commission of the European Communities.
- Champion, S., & Davis, L. (1958). Grouted concrete construction. *Reinf. Concrete Rev*, 569-608.
- Claybaugh, B. G., Earls, C. J., & Ahmadi, A. K. (2004). Fatigue and strength performance of concrete-filled steel-grid bridge deck. *Journal of Bridge Engineering*, 9(5), 435-443. doi.org/10.1061/(ASCE)1084-0702(2004)9:5(435)
- Coo, M., & Pheeraphan, T. (2015). Effect of sand, fly ash and coarse aggregate gradation on preplaced aggregate concrete studied through factorial design. *Construction and Building Materials*, 93, 812-821. doi.org/10.1016/j.conbuildmat.2015.05.086
- Coo, M., & Pheeraphan, T. (2016). Effect of sand, fly ash and limestone powder on preplaced aggregate concrete mechanical properties and reinforced beam shear capacity. *Construction and Building Materials*, 120, 581-592. doi.org/10.1016/j.conbuildmat.2016.05.128
- Diederich, P. (2010). Contribution à l'étude de l'influence des propriétés des fillers calcaires sur le comportement autoplaçant du béton (Doctoral dissertation, Université de Toulouse, Université Toulouse III-Paul Sabatier).
- Fairbairn, E. M., Silvano, M. M., Toledo Filho, R. D., Alves, J. L., & Ebecken, N. F. (2004). Optimization of mass concrete construction using genetic algorithms. *Computers & structures*, 82(2-3), 281-299. doi.org/10.1016/j.compstruc.2003.08.008
- Fanelli, M., & Giuseppetti, G. (1982). Safety monitoring of concrete dams. *International Water Power and Dam Construction*, 34(11), 31-33.
- Franck, A., & De Belie, N. (2006). Concrete floor-bovine claw contact pressures related to floor roughness and deformation of the claw. *Journal of dairy science*, 89(8), 2952-2964. doi.org/10.3168/jds.S0022-0302(06)72567-X
- Franck, A., Verheghe, B., & De Belie, N. (2008). The effect of concrete floor roughness on bovine claws using finite element analysis. *Journal of dairy science*, 91(1), 182-192. doi.org/10.3168/jds.2007-0211
- Gadri, K., & Guettala, A. (2017). Evaluation of bond strength between sand concrete as new repair material and ordinary concrete substrate (The surface roughness effect). *Construction and Building Materials*, 157, 1133-1144. doi.org/10.1016/j.conbuildmat.2017.09.183
- Goldstein, D. L., & Smith, D. H. (1999). The analysis of the effects of experiential training on sojourners' cross cultural adaptability. *International Journal of Intercultural Relations*. doi.org/10.1016/S0147-1767(98)00030-3
- Grigoriadis, K. (2016). Use of laser interferometry for measuring concrete substrate roughness in patch repairs. *Automation in Construction*, 64, 27-35. doi.org/10.1016/j.autcon.2015.12.025
- Gu, C. S., & Wu, Z. R. (2006). Safety monitoring of dams and dam foundations-theories & methods and their application. Nanjing: Ho hai University Press (in Chinese).
- Gu, C., Zhao, E., Jin, Y., & Su, H. (2011). Singular value diagnosis in dam safety monitoring effect values. *Science China Technological Sciences*, 54(5), 1169-1176. doi.org/10.1007/s11431-011-4339-7
- Guoqiang, L. Yi, Z.H. Su-Seng, P., & Yongqi, L. Effective Young's modulus estimation of concrete. *Cem. Concr. Res.* 29 (1999) 1455-1462. doi.org/10.1016/S0008-8846(99)00119-2
- Hanus, M. J., & Harris, A. T. (2013). Nanotechnology innovations for the construction industry. *Progress in materials science*, 58(7), 1056-1102. doi.org/10.1016/j.pmatsci.2013.04.001

- Hariri-Ardebili, M. A., & Saouma, V. E. (2016). Seismic fragility analysis of concrete dams: A state-of-the-art review. *Engineering structures*, 128, 374-399. doi.org/10.1016/j.engstruct.2016.09.034
- Haselton, C. B. (2007). Assessing seismic collapse safety of modern reinforced concrete moment frame buildings (Doctoral dissertation, Stanford University). doi.org/10.1061/40944(249)22
- He, X., Zheng, Z., Ma, M., Su, Y., Yang, J., Tan, H.,... & Strnadl, B. (2020). New treatment technology: The use of wet-milling concrete slurry waste to substitute cement. *Journal of Cleaner Production*, 242, 118347. doi.org/10.1016/j.jclepro.2019.118347
- He, Y., Zhang, X., Hooton, R. D., & Zhang, X. (2017). Effects of interface roughness and interface adhesion on new-to-old concrete bonding. *Construction and Building Materials*, 151, 582-590. doi.org/10.1016/j.conbuildmat.2017.05.049
- Higgins, C., & Mitchell, H. (2001). Behavior of composite bridge decks with alternative shear connectors. *Journal of Bridge Engineering*, 6(1), 17-22. doi.org/10.1061/(ASCE)1084-0702(2001)6:1(17)
- Hoła, J., Sadowski, L., Reiner, J., & Stach, S. (2015). Usefulness of 3D surface roughness parameters for nondestructive evaluation of pull-off adhesion of concrete layers. *Construction and Building Materials*, 84, 111-120. doi.org/10.1016/j.conbuildmat.2015.03.014
- Hong, L., Gu, X., & Lin, F. (2014). Influence of aggregate surface roughness on mechanical properties of interface and concrete. *Construction and Building Materials*, 65, 338-349. doi.org/10.1016/j.conbuildmat.2014.04.131
- Hudson, J. A., & Feng, X. T. (2015). *Rock Engineering Risk*, ISBN-10: 9781138027015, CRC Press, Taylor and Francis. doi.org/10.1201/b18395
- IFSTTAR, (2018). Recommendations for preventing disorders due to Delayed Ettringite Formation - Technical Guide, 2018.
- Issa, M. A., Issa, M. A., Islam, M. S., & Chudnovsky, A. (2003). Fractal dimension-a measure of fracture roughness and toughness of concrete. *Engineering Fracture Mechanics*, 70(1), 125-137. doi.org/10.1016/S0013-7944(02)00019-X
- Jeon, J., Lee, J., Shin, D., & Park, H. (2009). Development of dam safety management system. *Advances in Engineering Software*, 40(8), 554-563. doi.org/10.1016/j.advengsoft.2008.10.009
- Jiang, Y., Ling, T. C., Shi, C., & Pan, S. Y. (2018). Characteristics of steel slags and their use in cement and concrete-A review. *Resources, Conservation and Recycling*, 136, 187-197. doi.org/10.1016/j.resconrec.2018.04.023
- Jones, M. R., Zheng, L., & Newlands, M. D. (2003). Estimation of the filler content required to minimise voids ratio in concrete. *Magazine of concrete research*, 55(2), 193-202. doi.org/10.1680/mac.2003.55.2.193
- Joudi-Bahri, I., Lecomte, A., Ouezdou, M. B., & Achour, T. (2012). Use of limestone sands and fillers in concrete without superplasticizer. *Cement and Concrete Composites*, 34(6), 771-780. doi.org/10.1016/j.cemconcomp.2012.02.010
- Julio, E. N., Branco, F. A., & Silva, V. D. (2004). Concrete-to-concrete bond strength. Influence of the roughness of the substrate surface. *Construction and building materials*, 18(9), 675-681. doi.org/10.1016/j.conbuildmat.2004.04.023
- Justnes, H., Meland, I., Bjoergum, J. O., & Krane, J. (1992). The mechanism of silica fume action in concrete studied by solid state ²⁹Si NMR. In *NMR Seminar*, Guerville, France.
- Kang, S. H., Jeong, Y., Tan, K. H., & Moon, J. (2019). High-volume use of limestone in ultra-high performance fiber-reinforced concrete for reducing cement content and autogenous shrinkage. *Construction and Building Materials*, 213, 292-305. doi.org/10.1016/j.conbuildmat.2019.04.091
- Karsan, I. D., & Jirsa, J. O. (1969). Behavior of concrete under compressive loadings. *Journal of the Structural Division*. doi.org/10.1061/JSDEAG.0002424
- Khayat, K. H., & Libre, N. A. (2014). Automated measurement and control of concrete properties in a ready mix truck with VERIFI (No. NUTC R335). Missouri University of Science and Technology. Center for Transportation Infrastructure and Safety.
- Lastra-González, P., Indacoechea-Vega, I., Calzada-Pérez, M. A., Castro-Fresno, D., & Carpio-García, J. (2017). Analysis of the skid resistance and adherence between layers of asphalt concretes modified by dry way with polymeric waste. *Construction and Building Materials*, 133, 163-170. doi.org/10.1016/j.conbuildmat.2016.12.063
- Lee, B., & Oh, S. (2018). Modified electrical survey for effective leakage detection at concrete hydraulic facilities. *Journal of Applied Geophysics*, 149, 114-130. doi.org/10.1016/j.jappgeo.2017.08.006
- Liu, J. C., Sue, M. L., & Kou, C. H. (2009). Estimating the strength of concrete using surface rebound value and design parameters of concrete material. *Tamkang Journal of Science and Engineering*, 12(1), 1-7.
- Liu, Z., Wang, X., Zhang, Q., & Huang, C. (2019). Empirical mode decomposition based hybrid ensemble model for electrical energy consumption forecasting of the cement grinding process. *Measurement*, 138, 314-324. doi.org/10.1016/j.measurement.2019.02.062
- Maruyama, I., & Lura, P. (2019). Properties of early-age concrete relevant to cracking in massive concrete. *Cement and Concrete Research*, 123, 105770. doi.org/10.1016/j.cemconres.2019.05.015
- Matalkah, F., & Soroushian, P. (2018). Freeze thaw and deicer salt scaling resistance of concrete prepared with alkali aluminosilicate cement. *Construction and Building Materials*, 163, 200-213. doi.org/10.1016/j.conbuildmat.2017.12.119

- Mazighi, H., & Mihoubi, M. K. (2018). Study of the effect of upstream slope on water pressure in concrete gravity dam. *Procedia Structural Integrity*, 13, 1438-1441. doi.org/10.1016/j.prostr.2018.12.298
- Meng, Y., Fang, Y., Wan, M., Su, Q., Tian, B., & Tong, F. (2019). Research of concrete dam leakage detection based on anomaly current field of reservoir water. *Journal of applied geophysics*, 160, 242-253. doi.org/10.1016/j.jappgeo.2018.11.016
- Metha, K. P., & Monteiro, P. J. M. (2006). *Concrete Microstructure, Properties and Concretes*, third ed., McGraw-Hill, University of California at Berkeley, 2006.
- Middendorf, B., & Singh, N.B. (2006). *Cement International*. 4 (2006) 80-86.
- Molines, J., & Medina, J. R. (2015). Calibration of overtopping roughness factors for concrete armor units in non-breaking conditions using the CLASH database. *Coastal Engineering*, 96, 62-70. doi.org/10.1016/j.coastaleng.2014.11.008
- Moradloo, A. J., Adib, A., & Pirooznia, A. (2019). Damage analysis of arch concrete dams subjected to underwater explosion. *Applied Mathematical Modelling*, 75, 709-734. doi.org/10.1016/j.apm.2019.04.064
- Morohashi, N. Meyer, C., & Abdelgader, H.S. (2013). Concrete with recycled aggregates two-stage production method, *CPI-Concr. Plant Int.* 4 (2013) 34-41.
- Mostofinejad, N. (2005). Prediction of the modulus of elasticity of high strength concrete, *Iran. J. Sci. Technol., Trans. B Eng.* 29 (B3) (2005).
- Najjar, M. F. (2016). *Innovating Two-Stage Concrete with Improved Rheological, Mechanical and Durability Properties*.
- Najjar, M. F., & Abdelgader, H. S. (2009). Underwater concreting by using two-stage (preplaced aggregate) concrete. In *Proceedings of the 1st International Conference on Concrete Technology, Tabriz, Iran XX (Vol. 1)*.
- Najjar, M. F., Soliman, A. M., & Nehdi, M. L. (2014). Critical overview of two-stage concrete: Properties and applications. *Construction and Building Materials*, 62, 47-58. doi.org/10.1016/j.conbuildmat.2014.03.021
- Nejad, A. B. (2000). *Improvement of Cement and Sand Consumption in Concrete Volume*, Fourth Iran Dam Construction Conference, Tehran.
- Neville, A. M. (1995). *Properties of concrete (Vol. 4)*. London: Longman.
- Niklasch, C., & Herrmann, N. (2009). Nonlinear fluid-structure interaction calculation of the leakage behaviour of cracked concrete walls. *Nuclear Engineering and Design*, 239(9), 1628-1640. doi.org/10.1016/j.nucengdes.2008.09.001
- Nowek, A., Kaszubski, P., Abdelgader, H. S., & Górski, J. (2007). Effect of admixtures on fresh grout and two-stage (pre-placed aggregate) concrete. *Structural Concrete*, 8(1), 17-23. doi.org/10.1680/stco.2007.8.1.17
- O'Malley, J., & Abdelgader, H. S. (2010). Investigation into viability of using two-stage (pre-placed aggregate) concrete in Irish setting. *Frontiers of Architecture and Civil Engineering in China*, 4(1), 127-132. doi.org/10.1007/s11709-010-0007-4
- Onoue, K. (2019). Energy consumption characteristics of concrete using granulated blast-furnace slag sand related to nucleation and propagation of microcracks. *Construction and Building Materials*, 218, 404-412. doi.org/10.1016/j.conbuildmat.2019.05.141
- Pant, D. R., Wijeyewickrema, A. C., & ElGawady, M. A. (2013). Appropriate viscous damping for nonlinear time-history analysis of base-isolated reinforced concrete buildings. *Earthquake Engineering & Structural Dynamics*, 42(15), 2321-2339. doi.org/10.1002/eqe.2328
- Park, R., Priestley, M. J., & Gill, W. D. (1982). Ductility of square-confined concrete columns. *Journal of the structural division*, 108(4), 929-950. doi.org/10.1061/JSDEAG.0005933
- Paulay, T., & Priestley, M. N. (1992). *Seismic design of reinforced concrete and masonry buildings*. doi.org/10.1002/9780470172841
- Pelisser, F., Barcelos, A., Santos, D., Peterson, M., & Bernardin, A. M. (2012). Lightweight concrete production with low Portland cement consumption. *Journal of Cleaner Production*, 23(1), 68-74. doi.org/10.1016/j.jclepro.2011.10.010
- Pelisser, F., Vieira, A., & Bernardin, A. M. (2018). Efficient self-compacting concrete with low cement consumption. *Journal of Cleaner Production*, 175, 324-332. doi.org/10.1016/j.jclepro.2017.12.084
- Pereira, S., Magalhaes, F., Gomes, J. P., Cunha, A., & Lemos, J. V. (2018). Dynamic monitoring of a concrete arch dam during the first filling of the reservoir. *Engineering Structures*, 174, 548-560. doi.org/10.1016/j.engstruct.2018.07.076
- Popovics, S. (1973). A numerical approach to the complete stress-strain curve of concrete. *Cement and concrete research*, 3(5), 583-599. doi.org/10.1016/0008-8846(73)90096-3
- Poul, M. K., & Zerva, A. (2018). Nonlinear dynamic response of concrete gravity dams considering the deconvolution process. *Soil Dynamics and Earthquake Engineering*, 109, 324-338. doi.org/10.1016/j.soildyn.2018.03.025
- Qin, Z., Lai, Y., Tian, Y., & Yu, F. (2019). Frost-heaving mechanical model for concrete face slabs of earthen dams in cold regions. *Cold Regions Science and Technology*, 161, 91-98. doi.org/10.1016/j.coldregions.2019.03.009
- Rivera, F., Martínez, P., Castro, J., & López, M. (2015). Massive volume fly-ash concrete: A more sustainable material with fly ash replacing cement and aggregates. *Cement and Concrete Composites*, 63, 104-112. doi.org/10.1016/j.cemconcomp.2015.08.001

- Sanchez, F., & Sobolev, K. (2010). Nanotechnology in concrete—a review. *Construction and building materials*, 24(11), 2060-2071. doi.org/10.1016/j.conbuildmat.2010.03.014
- Santos, P. M., & Julio, E. N. (2007). Correlation between concrete-to-concrete bond strength and the roughness of the substrate surface. *Construction and Building Materials*, 21(8), 1688-1695. doi.org/10.1016/j.conbuildmat.2006.05.044
- Santos, P. M., & Júlio, E. N. (2013). A state-of-the-art review on roughness quantification methods for concrete surfaces. *Construction and Building Materials*, 38, 912-923. doi.org/10.1016/j.conbuildmat.2012.09.045
- Satyarno, I., Solehudin, A. P., Meyarto, C., Hadiyatmoko, D., Muhammad, P., & Afnan, R. (2014). Practical method for mix design of cement-based grout. *Procedia Engineering*, 95, 356-365. doi.org/10.1016/j.proeng.2014.12.194
- Schackow, A., Efftig, C., Gomes, I. R., Patruni, I. Z., Vicenzi, F., & Kramel, C. (2016). Temperature variation in concrete samples due to cement hydration. *Applied thermal engineering*, 103, 1362-1369. doi.org/10.1016/j.applthermaleng.2016.05.048
- Selçuk, L., & Gökçe, H. S. (2015). Estimation of the compressive strength of concrete under point load and its approach to strength criterions. *KSCE Journal of Civil Engineering*, 19(6), 1767-1774. doi.org/10.1007/s12205-015-1303-2
- Shaker, F., Rashad, A., & Allam, M. (2018). Properties of concrete incorporating locally produced Portland limestone cement. *Ain Shams Engineering Journal*, 9(4), 2301-2309. doi.org/10.1016/j.asej.2017.04.005
- Shen, Y., Wang, Y., Yang, Y., Sun, Q., Luo, T., & Zhang, H. (2019). Influence of surface roughness and hydrophilicity on bonding strength of concrete-rock interface. *Construction and Building Materials*, 213, 156-166. doi.org/10.1016/j.conbuildmat.2019.04.078
- Shon, C. S., Abdigaliyev, A., Bagitova, S., Chung, C. W., & Kim, D. (2018). Determination of air-void system and modified frost resistance number for freeze-thaw resistance evaluation of ternary blended concrete made of ordinary Portland cement/silica fume/class F fly ash. *Cold Regions Science and Technology*, 155, 127-136. doi.org/10.1016/j.coldregions.2018.08.003
- Singh, L. P., Karade, S. R., Bhattacharyya, S. K., Yousuf, M. M., & Ahalawat, S. (2013). Beneficial role of nanosilica in cement based materials—A review. *Construction and Building Materials*, 47, 1069-1077. doi.org/10.1016/j.conbuildmat.2013.05.052
- Singh, N. B., Kalra, M., & Saxena, S. K. (2017). Nanoscience of cement and concrete. *Materials today: proceedings*, 4(4), 5478-5487. doi.org/10.1016/j.matpr.2017.06.003
- Song, J., Gu, C., Su, H., Gu, H., & Huang, X. (2016). Observed displacement data-based identification method of structural damage in concrete dam. *Engineering Failure Analysis*, 66, 202-211. doi.org/10.1016/j.engfailanal.2016.04.013
- Song, X. F., Wei, J. F., & He, T. S. (2009). A method to repair concrete leakage through cracks by synthesizing super-absorbent resin in situ. *Construction and Building Materials*, 23(1), 386-391. doi.org/10.1016/j.conbuildmat.2007.11.009
- Spitz, N., Coniglio, N., El Mansori, M., Montagne, A., & Mezghani, S. (2018). Quantitative and representative adherence assessment of coated and uncoated concrete-formwork. *Surface and Coatings technology*, 352, 247-256. doi.org/10.1016/j.surfcoat.2018.07.098
- Stroeven, P. (2000). A stereological approach to roughness of fracture surfaces and tortuosity of transport paths in concrete. *Cement and Concrete Composites*, 22(5), 331-341. doi.org/10.1016/S0958-9465(00)00018-4
- Taillet, E., Lataste, J. F., Rivard, P., & Denis, A. (2014). Non-destructive evaluation of cracks in massive concrete using normal dc resistivity logging. *NDT & E International*, 63, 11-20. doi.org/10.1016/j.ndteint.2014.01.001
- Thomann, M., & Lebet, J. P. (2008). A mechanical model for connections by adherence for steel-concrete composite beams. *Engineering structures*, 30(1), 163-173. doi.org/10.1016/j.engstruct.2007.03.016
- Wang, J. Y., Chen, Z. Z., & Wu, K. (2019). Properties of calcium sulfoaluminate cement made ultra-high performance concrete: Tensile performance, acoustic emission monitoring of damage evolution and microstructure. *Construction and Building Materials*, 208, 767-779. doi.org/10.1016/j.conbuildmat.2019.03.057
- Wang, J., & Liu, A. L. (2008). Application of ABAQUS to calculation of creep thermal stress of mass concrete [J]. *Journal of Hohai University (Natural Sciences)*, 36(4), 0532-0537.
- Wong, T. S., & Lim, C. K. (2006). Effect of loss model on evaluation of Manning roughness coefficient of experimental concrete catchment. *Journal of hydrology*, 331(1-2), 205-218. doi.org/10.1016/j.jhydrol.2006.05.009
- Wu, L. X., Yin, Z. R., & Zhong, Y. P. (2003). Restudy on digital mine: Characteristics, framework and key technologies. *Journal of china coal society*, 28(1), 1-7.
- Wu, Z., Li, J., Gu, C., & Su, H. (2007). Review on hidden trouble detection and health diagnosis of hydraulic concrete structures. *Science in China Series E: Technological Sciences*, 50(1), 34-50. doi.org/10.1007/s11431-007-6003-9
- Xie, N., Dang, Y., & Shi, X. (2019). New insights into how MgCl₂ deteriorates Portland cement concrete. *Cement and Concrete Research*, 120, 244-255. doi.org/10.1016/j.cemconres.2019.03.026
- Xu, B., Liu, B., Zheng, D., Chen, L., & Wu, C. (2012). Analysis method of thermal dam deformation. *Science China Technological Sciences*, 55(6), 1765-1772. doi.org/10.1007/s11431-012-4839-0

- Xu, Z. K., Xiong, W., Wei, B. W., & Li, L. H. (2014). A new method of dam safety monitoring for identifying displacement mutation. In *Applied Mechanics and Materials* (Vol. 687, pp. 925-928). Trans Tech Publications Ltd.
doi.org/10.4028/www.scientific.net/AMM.687-691.925
- Yassin, M. H. M. (1994). *Nonlinear analysis of prestressed concrete structures under monotonic and cyclic loads*. University of California, Berkeley.
- Yoon, J. Y., & Kim, J. H. (2018). Evaluation on the consumption and performance of polycarboxylates in cement-based materials. *Construction and Building Materials*, 158, 423-431.
doi.org/10.1016/j.conbuildmat.2017.10.004
- Yoshitake, I., Kuroda, Y., Watada, Y., & Kim, Y. J. (2016). Fatigue performance of steel-concrete composite slabs with a cementitious adhesive subjected to water leakage. *Construction and Building Materials*, 111, 22-29.
doi.org/10.1016/j.conbuildmat.2016.02.048
- Zacoeb, A., & Ishibashi, K. (2011). Alternative Method for Concrete Structures Compressive Strength Estimation with Small-Scale Destruction. *Journal of Civil Engineering and Architecture*, 5(2).
doi.org/10.17265/1934-7359/2011.02.007
- Zhang, J. H., Wang, J., & Chai, L. S. (2015). Research on the hysteresis characteristic of concrete dam deformation and the influence of dam types. *Hydropower and Pumped Storage*, 1(4), 9-12.
- Zhang, J. H., Wang, J., & Chai, L. S. (2017). Factors influencing hysteresis characteristics of concrete dam deformation. *Water Science and Engineering*, 10(2), 166-174. doi.org/10.1016/j.wse.2017.03.007
- Zhang, J. P., Li, L. B., & Lu, Z. C. (2008). Review and prospect of dam safety monitoring. *Journal of China Institute of Water Resources and Hydropower Research*, 4(06), 317-322.
- Zhu, B. F. (1999). *Temperature stress and temperature control of mass concrete*. China Electric Power Press, Beijing.
- Zhu, C., Lv, J., Chen, L., Lin, W., Zhang, J., Yang, J., & Feng, J. (2019). Dark, heat-reflective, anti-ice rain and superhydrophobic cement concrete surfaces. *Construction and Building Materials*, 220, 21-28.
doi.org/10.1016/j.conbuildmat.2019.05.188
- Zou, X., Chao, A., Tian, Y., Wu, N., Zhang, H., Yu, T. Y., & Wang, X. (2012). An experimental study on the concrete hydration process using Fabry-Perot fiber optic temperature sensors. *Measurement*, 45(5), 1077-1082.
doi.org/10.1016/j.measurement.2012.01.034